



Model : Chavosh-200

The Chavosh crane has been designed in such a way that smooth and stable movement of the crane arm is possible at all times. Weights are added at the end of the crane arm in order to provide balance and stability during shooting sequences.

Interchangeable wheels of the dolly allows for Chavosh to be easily and quickly adapted for different application environments ranging from tracking based rails to studios.

Light weight and durability of the system stems from the special metal alloy used in its structure which makes Chavosh advantageous compared to other models.

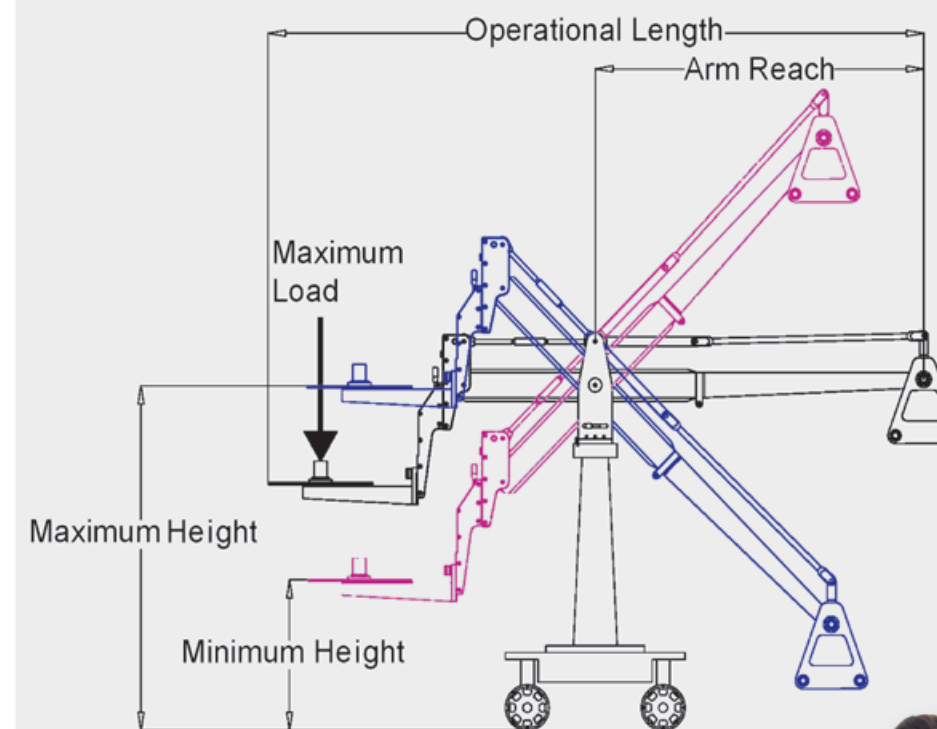
Chavosh can be used in different environments and applications, as it is easily transported and assembled due to the modular design of its parts and structure. A trained staff can assemble the system ready for work in about twenty minutes.



Counterweight



Counterweight



Specification

Arm reach	150 cm / 4.92 ft
Dolly Length	80 cm / 2.62 ft
Operational Length	300 cm / 9.84 ft
Dolly Width	80 cm / 2.62 ft
Maximum height	158cm / 5.18 ft
Dolly height	33 cm / 1.08 ft
Minimum height	65cm / 2.13 ft
Type of wheels	Hard rubber / Track
Maximum Load	250 kg / 551.156 lbs



Track & Studio Wheels



Steering Rod